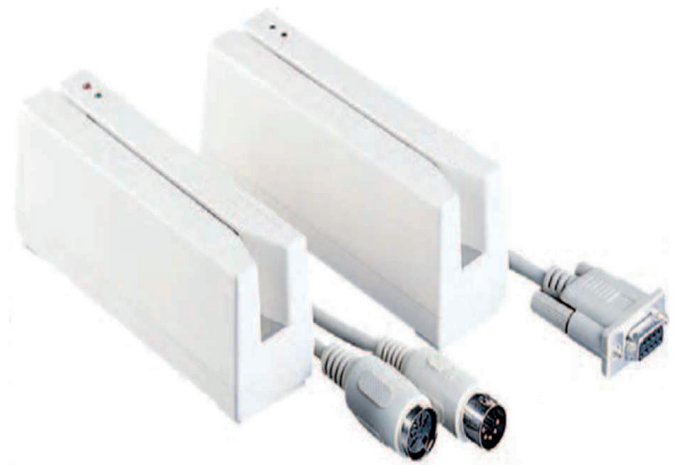


# Manual Swipe Reader

## KT-1000/2000/3000 Series

### Overview:

KT-1000/2000/3000 & MKT-3000 is an intelligent, programmable magnetic stripe reader. It reads up to three tracks of information with a single swipe, has a buzzer and two-color LED indicator to signal a successful read. Data format and intelligent interface output can be programmed and configured to match application and communication requirements.



### Features:

- Keyboard Wedge / RS232C / USB Interface
- ISO-1,2,3 Full Track Read (Lo-Co / Hi-Co)
- 12Mbps High Speed Communication
- No External Power Supply Needed
- Buzzer and Two-Color LED Indicator

### Applications:

- ATM
- Vending Machine
- Kiosk (information & payment)
- POS System

### Model Name Configuration:

	Kt				1: ISO-1 track	
Blank: Standard Size M: Mini Size		1: Keyboard Wedge	2: Default		2: ISO-2 track	0: Din Type
		2: RS232C	9: Customized		3: ISO-3 track	1: Mini Din Type
		3: USB			5: ISO-1&2 track	(Only for KT-1000) Series
		DU: Dual Head & Bi-Directional			6: ISO-2&3 track	
					8: ISO-1&2&3 track	